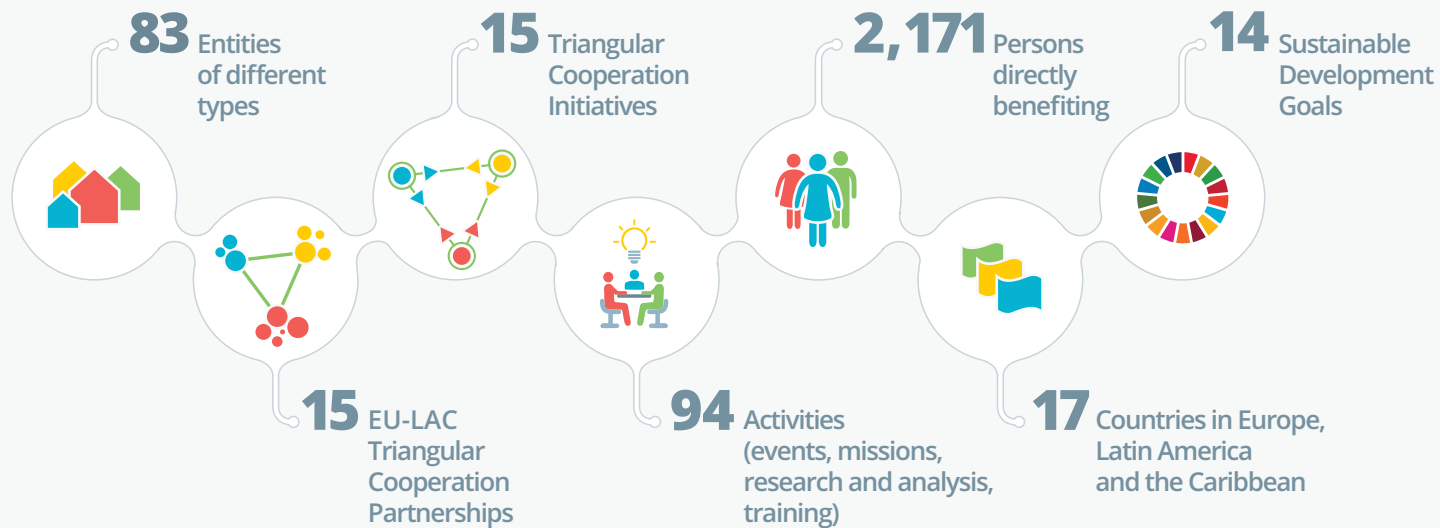


AdelanteWindow2021

IMPACT REPORT

Joint ex post analysis exercises - year 1



F E B R U A R Y 2 0 2 4

AdelanteWindow2021



EXECUTIVE SUMMARY

April 2022

The Effectiveness of the Triangular Cooperation Initiatives of the ADELANTE Window 2021

OBJECTIVE

Capacity building in the Partnership member entities.

The strengthening of the Partnerships themselves, thanks to the dynamics of joint work under the Triangular Cooperation modality and the added value of generating new knowledge.

ASSESSMENT

- 15 Initiatives were co-financed by the ADELANTE Window 2021.
- 14 Initiatives finalised implementation and submitted their implementation report in a timely manner.
- 14 Initiatives received approval of their implementation reports, thus fulfilling all of the commitments to date with the ADELANTE Window / DG INTPA / European Union.
- 14 Initiatives were effective: Under the Triangular Cooperation modality, they achieved their objective as envisioned in the formulation phase, adhering to the work plan and efficiently managing resources.

May 2023

The impact of the Triangular Cooperation Initiatives of the ADELANTE Window 2021

OBJECTIVE

Continuity of the Partnerships.

The application of knowledge generated through capacity building.

To meet the development challenge that gave rise to the Initiative (Beneficiary entities) and to increase the impact of its interventions (Provider entities) with the necessary quality and guarantees.

Future prospects.

ASSESSMENT

- 14 Partnerships were invited to carry out the ex post exercise.
- 14 Initiatives have been analysed.
- 14 Initiatives have had an impact.

On the continuity of the Partnerships:

[SDG 17 - Partnerships to achieve the goals].

- 7 Partnerships have maintained long-term continuity.
- Of these, 3 Partnerships have expanded their membership.
- 4 Partnerships have not maintained continuity over time, but the member entities have continued bilateral collaboration in the core areas of the Initiative.

With regard to the application of the knowledge generated:

- In 14 of the Partnerships, Beneficiary entities have applied the knowledge generated.
- Of these, in 7 Partnerships the Provider entities have also applied the knowledge generated

With regard to impact:

[Contribution to the 2030 Agenda as a whole, the ultimate goal of the ADELANTE Window, ADELANTE 2 and all EU interventions].

- 12 Partnerships have seen how the application of knowledge has enabled the Beneficiary entities to address the development challenge that gave rise to the Initiative, with the necessary quality and guarantees.
- Of these, in 7 the application of knowledge also by the Provider entities has increased the impact of their interventions.

With regard to future prospects:

- 14 Partnerships are looking to the future and have shown interest in the following ex post exercise.

Source: ADELANTE Extranet statistical system.

This joint ex post analysis exercise was carried out between March and May 2023 with the 12 Initiatives that showed interest.

The remaining two carried out the exercise in the months of January and February 2024. This Impact report, dated 'February 2024', collects the results of all 14 exercises.

The 15 Triangular Cooperation Initiatives co-financed under the ADELANTE Window 2021

- Biomass recovery model in the forestry sector
- Comprehensive care for Chagas disease
- Contributing to the digital transformation of manufacturing SMEs
- Contributing to the social inclusion of the deaf
- Contribution to sustainable rural production through a Gender-sensitive and Cultural Approach
- Increasing competitiveness through an innovation-driven local agenda
- Innovative Laboratory for Reciprocal Entrepreneurship in the Social Economy (LIDERES)
- Public policies to promote Responsible Business Conduct at the local level
- Quinoa Initiative
- Smart Cities
- Soft Landing COxDE for Colombian impact-driven start-ups
- Strengthening value chains and their contribution to the SDGs
- Telemedicine for social inclusion
- Training in Restorative Justice and Therapeutic Jurisprudence
- Workshop schools for employment and entrepreneurship

More information on each of the Initiatives:
<https://www.adelante2.eu/en/initiatives-list>

ADELANTE Window 2021 summary report:
<https://www.adelante2.eu/docs-pdf/Summary-Report-ADELANTE-Window-2021-EN-June-22.pdf>

TABLE OF CONTENT

April 2022 - Effectiveness of the Triangular Cooperation Initiatives of the ADELANTE Window 2021	p. 5
The finalisation and closure of the Initiatives.	
The objective/effectiveness of the Initiatives.	
The assessment of the level of effectiveness of the Initiatives.	
May 2023 - Impact of the Triangular Cooperation Initiatives of the ADELANTE Window 2021	p.6
After the finalisation and closure of the Initiatives.	
The impact of the Initiatives.	
The assessment of the level of impact of the Initiatives one year after their completion. Joint ex post analysis exercises - year 1.	
Summary table of the impact of the Initiatives	p. 8
Initiative impact assessment forms	p. 9
ANNEXES:	
ANNEX A	
Effectiveness. Quality markers to assess the effectiveness of Triangular Cooperation Initiatives co-financed by the ADELANTE Window.	p. 21
ANNEX B	
Impact. Form for the joint ex post analysis exercise.	p. 22

April 2022 - The Effectiveness of the Triangular Cooperation Initiatives of the ADELANTE Window 2021

The finalisation and closure of the Initiatives.

Implementation of the 15 Triangular Cooperation Initiatives (Initiatives) co-financed through the ADELANTE Window 2021 began in August 2021 and ended in April 2022. During that time, the ‘official closure meetings’ of each of the Initiatives were held, providing enriching and useful opportunities for joint reflection and learning. These meetings were attended by all stakeholders, both from DG INTPA / European Union (including the relevant EU Delegations) and the Partnerships. Subsequently, an intensive review was carried out by the ADELANTE Window Team on the ‘implementation reports’ submitted by the Partnerships, in order to correctly conclude the implementation period.

The objective / effectiveness of the Initiatives.

As stated in item A.4.b of the Guidelines for applicants, the Initiatives ‘are understood as having a broader scope than an activity but less broad than a project (in terms of budget, time and scope)’, featuring an approach that is consistent with the characteristics of Triangular Cooperation. In terms of the time frame, there is a maximum execution period of between 180 days (ADELANTE Window 2021, the subject of this Report) and 270 days (ADELANTE Window 2023). Based on this data, it is understood that during the implementation period there is an intense exercise that consists of ‘sharing’ knowledge and experience. This knowledge and experience is ‘requested’ and ‘harnessed’ by the Beneficiary entities in order to respond to their respective development challenges, and is ‘offered’ by the First and Second providers. This ‘triangular knowledge sharing approach’ is possible thanks to the joint collaboration during the implementation phase, coordinated through a series of activities and a work plan (intervention methodology) that are meticulously designed for this purpose; all of which aims to ‘generate’ new knowledge, with its corresponding systematisation, modelling or parameter setting. However, due to the nature of the implementation phase, this is very rarely ‘apply’ during that period (pilot experiences, limited in time and scope).

Therefore, in line with the usual intervention practice under the Triangular Cooperation modality, once the implementation period of the Initiatives has concluded, the focus shifts to:

Capacity building in the Partnership member entities.

This means that the objectives of the Initiatives, understood in terms of effectiveness (objectives of the work to be achieved at the end of implementation), are formulated in terms of ‘capacity building’ and not in terms of ‘process or development impact’, and are focused on ‘the entities’ and not on the ‘final beneficiaries’; on the understanding that the development impact for the final beneficiaries will be achieved later on through the application of the knowledge acquired over time. In addition, we must not forget the definition of Triangular Cooperation itself, which states that ‘it is a horizontal modality centered on partnerships’. In this sense, at the end of the implementation period of the Initiatives, in addition to capacity building, it is also focused on:

The strengthening of the Partnerships themselves, thanks to the dynamics of joint work under the Triangular Cooperation modality and the added value of generating new knowledge.

The assessment of the level of effectiveness of the Initiatives

The information shared (meetings) and presented (reports) by each Partnership was analysed by the ADELANTE Window Team in order to conduct a rigorous final assessment of the level of effectiveness of each of the Initiatives. In order to establish the level of effectiveness of the Initiatives, the ADELANTE Window has a ‘quality marker system’ to synthesise the exercise and standardise the results. There are 19 markers developed within the Triangular Cooperation approach, which focus on relevance, efficiency, effectiveness, potential impact, potential sustainability and the incorporation of cross-cutting approaches (see Annex A). It is worth noting that the participation and involvement of the ADELANTE Window Team from the formulation phase and throughout the implementation of each Initiative, with a commitment to the quality of the process as ‘one of the partners’, has provided the Team with significant knowledge of the entire process and the possibility of adding considerable value when carrying out this final assessment.

As a result of this assessment, we can confirm that:

- **15 Initiatives were co-financed by the ADELANTE Window 2021.**
 - **14 Initiatives finalised implementation and submitted their implementation report in a timely manner.**
 - **14 Initiatives received approval of their implementation reports, thus fulfilling all of the commitments to date with the ADELANTE Window / DG INTPA / European Union.**
 - **14 Initiatives were effective: Under the Triangular Cooperation modality, they achieved their objective as envisioned in the formulation phase, adhering to the work plan and efficiently managing resources.**
- Source: ADELANTE Extranet statistical system.*

May 2023 - The impact of the Triangular Cooperation Initiatives of the ADELANTE Window 2021

After the finalisation and closure of the Initiatives.

Upon concluding the implementation period, the challenge for each of the Partnerships was to ‘apply’ the knowledge generated in order to meet the development challenges initially presented (in the case of the Beneficiary entities), and to increase the impact of their interventions (in the case of the Provider entities).

In turn, the challenge for the ADELANTE Window Team was to ensure its availability to support the Partnerships and to monitor the progress over time of the processes initiated during implementation, as well as their corresponding impact.

The impact of the Initiatives..

Based on the characteristics of Triangular Cooperation as a modality, once the capacity building of the Partnership member entities and of the Partnerships themselves has been confirmed (effectiveness), the ADELANTE Window's focus has been on the progress made over time in the processes initiated during implementation (impact), centred on the following four aspects:

Continuity of the Partnerships.

The application of knowledge generated through capacity building.

To meet the development challenge that gave rise to the Initiative (Beneficiary entities) and to increase the impact of its interventions (Provider entities) with the necessary quality and guarantees.

Future prospects.

Assessment of the level of impact of the Initiatives one year after their completion - Joint ex post analysis exercises - year 1.

In order to determine the scope of the aspects mentioned in the previous point, the policy framework of the ADELANTE Window provides for ‘joint ex post analysis exercises’ (ex post exercise) for each of the co-financed Initiatives, on an annual basis.

Not only is the implementation of these exercises included as one of the four phases of the management cycle of the Initiatives, but they are also a substantial part of the ADELANTE Window approach, reflecting the particular commitment of DG INTPA / European Union to the sustainability and impact of the co-financed interventions.

In this regard, and as envisioned in item A.5.b of the Guidelines for applicants, the corresponding ex post exercises began one year after concluding the Initiatives co-financed by the ADELANTE Window 2021.

In order to ensure joint work with the Partnerships, the exercises were developed according to the following process: a) Communication to the Partnership about the start of the process and explanation of the objectives and work dynamics; b) An ‘ex post meeting’ with each of the Partnerships, presentation of the ‘ex post form’ (see Annex B), discussion on each of its guiding questions and final reflection; c) Invitation to each of the Partnerships to fill in the form on the ADELANTE Extranet; and d) Analysis and systematisation of the data, publication of the conclusions and dissemination of the results.


The information shared (meetings) and presented (form) by each Partnership was analysed by the ADELANTE Window Team in order to make a rigorous final assessment of the level of impact of each of the Initiatives one year after their completion.

As a result of this final assessment, we can confirm:

- **14 Partnerships were invited to carry out the ex post exercise.**
 - **14 Initiatives have been analysed.**
 - **14 Initiatives have had an impact.**
- On the continuity of the Partnerships:**
[SDG 17 - Partnerships to achieve the goals].
- **7 Partnerships have maintained long-term continuity.**
 - **Of these, 3 Partnerships have expanded their membership.**
 - **5 Partnerships have not maintained continuity over time, but the member entities have continued bilateral collaboration in the core areas of the Initiative.**
- With regard to the application of the knowledge generated:**
- **In 14 of the Partnerships, Beneficiary entities have applied the knowledge generated.**
 - **Of these, in 7 Partnerships the Provider entities have also applied the knowledge generated**
- With regard to impact:**
[Contribution to the 2030 Agenda as a whole, the ultimate goal of the ADELANTE Window, ADELANTE 2 and all EU interventions].
- **14 Partnerships have seen how the application of knowledge has enabled the Beneficiary entities to address the development challenge that gave rise to the Initiative, with the necessary quality and guarantees.**
 - **Of these, in 7 the application of knowledge also by the Provider entities has increased the impact of their interventions.**
- With regard to future prospects:**
- **14 Partnerships are looking to the future and have shown interest in the following ex post exercise.**
- Source: ADELANTE Extranet statistical system.*

In the following pages, an ‘**impact factsheet**’ is presented for each Initiative, with a synthesis of the main results of the exercise.

Each factsheet also sets out the factors that the Partnerships consider to have enabled or hindered impact, as described above.

In some cases, certain relevant elements are highlighted  that demonstrate a strong added value.

12 of the 14 Partnerships showed their interest in carrying out the joint ex post analysis exercises one year after the end of the Initiatives, as foreseen in the ADELANTE Window management cycle. These exercises took place throughout the months of March, April and May 2023. The two remaining Partnerships joined the process later, with these two exercises taking place in the months of January and February 2024. This Impact report includes the results of all 14 exercises.

We trust that this exercise and the corresponding publication of results will be useful for the entities and Partnerships that have participated, as well as for those that are currently involved in ADELANTE Window Initiatives or in projects of the different funds co-financed by ADELANTE 2.

We are also confident that it will be useful for all the actors involved in the Triangular Cooperation system, by providing evidence and encouraging reflection on the effectiveness, impact and sustainability of development initiatives carried out under this modality.

Recalling that the ex post exercise is organised on an annual basis, the second exercise of the ADELANTE Window 2021 will take place in 2024. The first exercise of the ADELANTE Window 2022 will also take place at that time.



Second joint ex post analysis exercise ADELANTE Window 2021

(2 years after completing implementation of each Initiative).

First joint ex post analysis exercise ADELANTE Window 2022

(1 year after completing implementation of each Initiative).

Summary table of the impact

Joint ex post analysis exercise - year 1

Summary table of the impact Joint ex post analysis exercise - year 1	Effective- ness (achieve the objective - capacity building of the entities and the Partner- ships - at the end of the imple- mentation period)	Continuity of the Partnership				Application of the knowledge generated			Impact		Future prospects
		Partnership has not maintained continuity over time		Partnership has maintained continuity over time		The knowled- ge gene- rated has not been applied	The knowledge genera- ted has been applied		Beneficiary entities: address the development challengethat gave rise to the Initiati- ve with the necessary quality and guarantees.	Beneficiary entities + Provider entities: increased the impact of their interventions	
		Partnership member entities have not continued collaborating in the core areas of the Initiative	Partnership member entities continue to work toge- ther in the core areas of the Initiative	The compo- sition of the partnership has not changed	The compo- sition of the Partnership has grown to include more members		By the Beneficiary entities	By the Beneficiary entities and the Provider entities			
Biomass recovery model in the forestry sector											
Comprehensive care for Chagas disease											
Contributing to the digital transformation of SMEs											
Contributing to the social inclusion of the deaf	-	-	-	-	-	-	-	-	-	-	-
Contribution to sustainable rural production											
Increasing competitiveness											
Innovative Laboratory for Reciprocal Entrepreneurship											
Public policies to promote Responsible Business											
Quinoa Initiative											
Smart Cities											
Soft Landing COxDE for Colombian start-ups											
Strengthening value chains											
Telemedicine for social inclusion											
Training in Restorative Justice											
Workshop schools for employment											

Biomass recovery model in the forestry sector

A TRIANGULAR COOPERATION INITIATIVE MEXICO • PERU • SPAIN • EUROPEAN UNION



>> More information



Objective

(reached upon finalising the implementation period)

This Triangular Cooperation Initiative strengthened the capacities of the Partnership member entities in defining and implementing a biomass recovery model in the forestry sector, based on harnessing the potential of forestry clusters and other industries in the area, resulting in a major impact on job creation in this sector and aiming to replicate this experience in both Latin America and Europe.

Continuity of the Partnership

STARTING POINT: Existing North-South relationship that has been strengthened by the incorporation of Latin American and Caribbean partners as First providers.

The Partnership, as such, has not been consolidated and has not been maintained over time.

However, the Partnership member entities have continued their bilateral collaboration on high-impact projects in the core areas of the Initiative

Application of the knowledge generated

The knowledge generated has been applied by the Beneficiary entity.

It is also worth noting the use and application of such knowledge by the First provider. This has led them to gain greater prominence in their scope of action, creating spaces for collaboration with more actors.

During its implementation, the Initiative involved final beneficiaries (industries and other actors in the forestry sector).

The Beneficiary entity has maintained close ties and collaboration with these groups, even extending the scope, who have benefited and have applied the knowledge generated during the Initiative as well as from related actions.

Impact

Applying this knowledge has enabled the Beneficiary entity to successfully tackle the development challenge that gave rise to the Initiative with the necessary quality and guarantees.

Future prospects

Maintain bilateral relations between the different Partnership member entities, as well as bring in new entities from each of the territories.

Continue to make progress in applying knowledge by the Beneficiary entity.

Continue to make progress in the transfer of knowledge to the beneficiary groups, monitoring and evaluating the impact in their respective areas of intervention.

Harness the working dynamics and the corresponding lessons learnt to encourage action on a broader scale.



First steps towards an Ibero-American biomass platform.

FACTORS THAT HAVE ENABLED IMPACT

The relevance of the intervention methodology designed for the Initiative.

FACTORS THAT HAVE HINDERED IMPACT

-

NEW EX POST EXERCISE

Yes (2024)

Comprehensive care for Chagas disease

A TRIANGULAR COOPERATION INITIATIVE **BOLIVIA • PARAGUAY • SPAIN • EUROPEAN UNION**



[» More information](#)

BENEFICIARY



FIRST PROVIDER



SECOND PROVIDER



Objective

(reached upon finalising the implementation period)

This Triangular Cooperation Initiative has led to capacity building among the professionals of Paraguay's National Chagas Disease Control Programme (PNCP), and at the same time has laid the foundations for replicating a successful model of comprehensive care (diagnosis and treatment) for Chagas disease. It has also provided new insights, leading to improvements in the model, which is now available to other endemic and emerging countries as an effective contribution to the current challenges of health systems in Latin America and the Caribbean and certain European countries.

Continuity of the Partnership

STARTING POINT: Existing North-South relationship that has extended its scope to include more Beneficiary entities in Latin America and the Caribbean.

The Partnership, as such, has been strengthened and maintained over time.

The dynamic of collaboration and joint work between all the Partnership member entities involved in the Initiative has been maintained.

In addition, a working group has been set up which has made it possible to replicate the knowledge generated within the framework of the Initiative, reaching more direct beneficiaries.

Application of the knowledge generated

The knowledge generated has been applied by the Beneficiary entity.

It is also worth noting the use and application of such knowledge by the First provider. This has led them to gain greater prominence in their scope of action, creating training opportunities together with other Bolivian entities.

During implementation, the Initiative involved final beneficiaries (living in the areas affected by Chagas disease in Paraguay).

The Beneficiary entity has continued to work closely with these groups, which have benefited from a greater capacity to detect and provide comprehensive care for patients with Chagas disease in Paraguay.



Joint preparation of an epidemiological survey by the Beneficiary entity and the Second provider, which has made it possible to identify the incidence of Chagas disease in Paraguay's Chaco region.



Impact

Applying this knowledge has enabled the Beneficiary entity to successfully tackle the development challenge that gave rise to the Initiative with the necessary quality and guarantees. At the same time, the other Partnership member entities have increased the impact of their interventions.

Future prospects

Maintain the working dynamic of the Partnership and its receptiveness to new entities.

Continue to make progress in applying knowledge from the Beneficiary entity.

Continue to make progress in the transfer of knowledge to the beneficiary groups, monitoring and evaluating the impact in their respective areas of intervention.

Maintain the communication and visibility approach of the ADELANTE Window as a guarantee of quality.

FACTORS THAT HAVE ENABLED IMPACT

The relevance of the knowledge generated as a response to the objectives of the beneficiary entities and of the final beneficiary groups.

The identification of topics that are highly relevant to all Partnership member entities.

The establishment of lines of action with a long-term vision beyond the implementation period.

NEW EX POST EXERCISE

Yes (2024)

Contributing to the digital transformation of manufacturing SMEs

A TRIANGULAR COOPERATION INITIATIVE **BRAZIL • CUBA • MEXICO • SPAIN • EUROPEAN UNION**



[» More information](#)

BENEFICIARY



FIRST PROVIDER



SECOND PROVIDER



Objective

(reached upon finalising the implementation period)

This Triangular Cooperation Initiative strengthened the capacities of the Partnership member entities to engage in dialogue with the business sector, and to respond to their needs related to manufacturing processes, particularly in terms of the digital transformation processes of manufacturing SMEs, thus positioning the university as a key player in the productive sector and in sustainable economic growth.

Continuity of the Partnership

STARTING POINT: Existing North-South and South-South relationship that was strengthened by the combination of both modalities (the Beneficiary entity being the unifying partner).

The Partnership, as such, has been strengthened and maintained over time.

The dynamic of collaboration and joint work between all the Partnership member entities in the core areas of the Initiative has been maintained.

In addition, new entities are in the process of being incorporated.

Application of the knowledge generated

The knowledge generated has been applied by the Beneficiary entity.

This application of knowledge has allowed them to lead important processes at the regional and national level, as well as the development and dissemination of numerous academic and specialised initiatives.



Agreement with the Scientific and Technological Park of Matanzas for the creation of a small and medium-sized enterprise (SME) providing 3D services for the biomedical sector.



Award from the Territorial Delegation of the Ministry of Science, Technology, and the Environment of Cuba.

During its implementation, the Initiative involved final beneficiaries (SMEs in the region).

The Beneficiary entity has maintained and even reinforced a close working relationship with these groups, who have benefited and have applied the knowledge generated during the Initiative and afterwards.



Technological initiatives in four SMEs in the region.



Impact

Applying this knowledge has enabled the Beneficiary entity to successfully tackle the development challenge that gave rise to the Initiative, with the necessary quality and guarantees.

Future prospects

Continue the Partnership's work dynamics and openness towards new entities.

Keep up the momentum of applying the knowledge generated by the Beneficiary entities.

Continue to make progress in the transfer of knowledge to the beneficiary groups, monitoring and evaluating the impact in their respective areas of intervention.

Maintain the communication and visibility dynamics associated with the ADELANTE Window as a guarantee of quality.

FACTORS THAT HAVE ENABLED IMPACT

The relevance of the knowledge generated as a response to the challenges of the Beneficiary entity.

The relevant partnership framework designed during the implementation of the Initiative.

The establishment of lines of action with a time-frame beyond the implementation period.

FACTORS THAT HAVE HINDERED IMPACT

The complex socio-economic situation in the beneficiary country.

NEW EX POST EXERCISE

Yes (2024)

Contribution to sustainable rural production through a Gender-sensitive and Cultural Approach

A TRIANGULAR COOPERATION INITIATIVE CUBA • MEXICO • SPAIN • EUROPEAN UNION



>> More information

BENEFICIARY



FIRST PROVIDER



SECOND PROVIDER



Objective

(reached upon finalising the implementation period)

This Triangular Cooperation Initiative strengthened the capacities of the Partnership member entities in designing strategies and developing sustainable production initiatives that address the effects of climate change, effectively integrating a gender-sensitive and cultural approach.

Continuity of the Partnership

STARTING POINT: Existing North-South relationship that has been strengthened by the addition of Latin American and Caribbean partners as First providers. The Partnership, as such, has not been consolidated and has not been maintained over time.

The member entities, while continuing to engage in bilateral collaboration, have not continued to work together in the core areas of the Initiative.

Application of the knowledge generated

The knowledge generated has been partially applied by some Beneficiary entities, more in terms of concrete actions than at the policy level.

During its implementation, the Initiative involved final beneficiary groups (producer units).

Some of the Beneficiary entities has continued to work closely with these groups, who have benefited and have applied the knowledge generated during the Initiative.

Impact

Applying the generated knowledge has enabled the Beneficiary entities to successfully tackle the development challenge that gave rise to the Initiative with the necessary quality and guarantees.

Future prospects

Maintain bilateral relations between Partnership member entities in order to identify new opportunities for the application of the knowledge generated, when the socio-economic situation of the beneficiary country allows for it.

For certain Beneficiary entities, maintaining support, monitoring and evaluating the application of the knowledge and the corresponding benefits by the final beneficiary groups.

FACTORS THAT HAVE ENABLED IMPACT

The alignment of the knowledge generated with the challenges faced by the final beneficiary groups (productive units).

FACTORS THAT HAVE HINDERED IMPACT

The complex socio-economic situation in the beneficiary country.

NEW EX POST EXERCISE

Yes (2024)

Increasing competitiveness through an innovation-driven local agenda

A TRIANGULAR COOPERATION INITIATIVE CUBA • MEXICO • SPAIN • EUROPEAN UNION



>> More information

BENEFICIARY



FIRST PROVIDER



SECOND PROVIDER



Objective

(reached upon finalising the implementation period)

This Triangular Cooperation Initiative strengthened the capacities of the Partnership member entities for local innovation-based planning, as a particularly suitable development modality to address the challenge of establishing local actors as leaders in sustainable development (localisation of the 2030 Agenda), thus creating a model that can be applied in other contexts.

Continuity of the Partnership

STARTING POINT: Existing North-South and South-South relationship that was strengthened by the combination of both modalities (the Beneficiary entity being the unifying partner).

The Partnership, as such, has not been consolidated and has not been maintained over time.

However, some of the Partnership member entities continue to work bilaterally in the core areas of the Initiative.

Application of the knowledge generated

The knowledge generated has been applied by the Beneficiary entity.

This has enabled it to lead the development process designed during implementation, as well as to lead an important initiative in its scope of intervention.

Establishment of a company as an incubator for the Cienfuegos Science and Technology Park.

Invitation to the University of Sancti Spiritus, a member of another ADELANTE Window 2021 partnership, to join the board of directors of the company.

During its implementation, the Initiative involved final beneficiary groups (entrepreneurs).

The Beneficiary entity has continued to work closely with these groups, who have benefited and have applied the knowledge generated during the Initiative.

Impact

Applying this knowledge has enabled the Beneficiary entity to successfully tackle the development challenge that gave rise to the Initiative with the necessary quality and guarantees.

Future prospects

Maintain bilateral relations between the different Partnership member entities and add new entities with which to establish Triangular Cooperation models.

Continue to make progress in applying knowledge by the Beneficiary entity.

Continue to make progress in the transfer of knowledge to the beneficiary groups, monitoring and evaluating the impact in their respective areas of intervention.

Continue to seek national public and international funding to complete the development process designed during implementation of the Initiative, which remains relevant.

FACTORS THAT HAVE ENABLED IMPACT

The methodology used during implementation, which enabled a high level of ownership of the knowledge by the Beneficiary entity.

Synergy with national and regional policy priorities.

FACTORS THAT HAVE HINDERED IMPACT

–

NEW EX POST EXERCISE

Yes (2024)

Innovative Laboratory for Reciprocal Entrepreneurship in the Social Economy (LIDERES)

A TRIANGULAR COOPERATION INITIATIVE **BOLIVIA • MEXICO • SPAIN • EUROPEAN UNION**



[» More information](#)

BENEFICIARY	FIRST PROVIDER	SECOND PROVIDER	COLLABORATING ENTITIES	
 CAMARA DE INDUSTRIA, COMERCIO SERVICIOS Y TURISMO DE SANTA CRUZ - BOLIVIA		 GOBIERNO de CANTABRIA CONSEJERÍA DE ECONOMÍA Y HACIENDA	 TRIANGULAR COOPERATION EU-LAC FACILITY CO-FINANCED BY THE EUROPEAN UNION	Ashoka Mexico Carolina Foundation

Objective

(reached upon finalising the implementation period)


This Triangular Cooperation Initiative strengthened the capacities of the Partnership member entities and various with whom they work in their territories, to design and implement models to support social entrepreneurship within the region (tapping into the unique characteristics of the region and the strengths of each of the actors), with the aim of contributing to the creation of territorial development models that reduce inequalities and promote social cohesion.

Continuity of the Partnership

STARTING POINT: Existing North-South and South-South relationship that was strengthened through the combination of both modalities (the First provider being the unifying partner).

The Partnership, as such, has been strengthened and maintained over time.

The dynamic of collaboration and joint work between all the Partnership member entities in the core areas of the Initiative has been maintained. This dynamic has made it possible to identify new areas of collaboration with a high added value.

 **CAINCO's participation in the Programme for the Transfer of Incubation Methodology to Universities, carried out by the Technological Institute of Monterrey and financed by the IDB Lab.**

Application of the knowledge generated

The knowledge generated has been applied by all Partnership member entities.

This has led them to gain greater prominence in their scope of action, creating spaces for collaboration with more actors.


During its implementation, the Initiative involved final beneficiaries (entrepreneurial ecosystems).

The Partnership member entities have continued to work closely with these groups, even extending the scope, who have benefited and have applied the knowledge generated during the Initiative, as well as from related initiatives.

Impact

Applying this knowledge has enabled the Beneficiary entity to successfully tackle the development challenge that gave rise to the Initiative with the necessary quality and guarantees. At the same time, the other Partnership member entities have increased the impact of their interventions.

In addition, this has led to high-impact actions beyond what was planned in the Initiative.

 **Environmental sustainability programme for companies in Santa Cruz, with the support of the Government of Cantabria in the framework of AI-Invest 6.0.**

Future prospects

Maintain the Partnership's work dynamics and openness towards new entities, especially actors in each of the territories of the Partnership member entities. Continue to make progress in applying knowledge by all Partnership member entities.

Continue to make progress in the transfer of knowledge to the beneficiary groups, extending the scope, and monitoring and evaluating the impact in their respective areas of intervention.

FACTORS THAT HAVE ENABLED IMPACT

The commitment to a dual level of work (political and technical) in the framework of the Initiative.

The combination of strategic and operational lines of action.

The identification of issues highly relevant to all Partnership member entities.

FACTORS THAT HAVE HINDERED IMPACT

–

NEW EX POST EXERCISE

Yes (2024)

Public policies to promote Responsible Business Conduct at the local level

A TRIANGULAR COOPERATION INITIATIVE **ARGENTINA • COLOMBIA • SPAIN • EUROPEAN UNION**



[» More information](#)

BENEFICIARY		FIRST PROVIDER	SECOND PROVIDER	COLLABORATING ENTITIES					
	Buenos Aires Ciudad								United Nations High Commissioner for Human Rights - Regional Office for South America Spanish Agency for International Development Cooperation - Technical Cooperation Office of Colombia

Objective

(reached upon finalising the implementation period)

This Triangular Cooperation Initiative strengthened the capacities of the Partnership member entities to design and implement public policies on human rights and business at the local level, thus generating a 'guidance document' that could be adapted to this context, as a first step towards a replicable model at the national and regional levels.

Continuity of the Partnership

STARTING POINT: Existing North-South relationship that extended its scope to more Beneficiaries in Latin America and the Caribbean.

The Partnership, as such, has been strengthened and maintained over time.

The dynamic of collaboration and joint work between all the Partnership member entities in the core areas of the Initiative has been maintained.

In addition, a solid platform for collaboration has been created and reinforced by incorporating new entities from Partnership countries as well as other countries in the region.

 **Creation of the Alliance of Responsible Territories Latin America-Europe (ATRAE Alliance).**

Application of the knowledge generated

The knowledge generated has been applied by all Partnership member entities.

Applying this knowledge has led them to gain greater prominence in their scope of action, creating spaces for collaboration with more actors on a national, regional and international scale.

Thanks to this Initiative, the Partnership member entities have participated as knowledge providers in large-scale strategic processes.

 **Support for the preparation of the National Action Plan on Business and Human Rights in Argentina.**

During its implementation, the Initiative involved final beneficiaries (employees of private business entities in the beneficiary country).

The Beneficiary entities have continued to work closely with these groups, even extending the scope, who have benefited and have applied the knowledge generated during the Initiative, as well as from the knowledge arising from the platform that was created through the Initiative.

Impact

Applying this knowledge has enabled the Beneficiary entity to successfully tackle the development challenge that gave rise to the Initiative with the necessary quality and guarantees. At the same time, the other Partnership member entities have increased the impact of their interventions.

Future prospects

Continue to make progress in the Partnership's work, which is already becoming a reliable platform, with a commitment to increase the number of entities involved, in order to generate new knowledge and to share/offer such knowledge.

Continue to seek national public funding and international funding to strengthen the platform and broaden its objectives, which remain relevant.

FACTORS THAT HAVE ENABLED IMPACT

The shared commitment from the outset to ensure the continuity and even extend the Partnership beyond the scope of the Initiative.

Internal reflection during the implementation of the Initiative on the best model to ensure the Partnership's continuity.

The relevance of the topic in relation to processes of high priority in the countries involved.

FACTORS THAT HAVE HINDERED IMPACT

–

NEW EX POST EXERCISE

Yes (2024)

Quinoa Initiative

A TRIANGULAR COOPERATION INITIATIVE ARGENTINA • ITALY • MEXICO • EUROPEAN UNION



[» More information](#)

BENEFICIARY	FIRST PROVIDER	SECOND PROVIDER	COLLABORATING ENTITIES
Desde 2003 acompañando historias de vida	People for development MÉXICO	People for development ITALIA	TRIANGULAR COOPERATION EU-LAC FACILITY CO-FINANCED BY THE EUROPEAN UNION

Objective

(reached upon finalising the implementation period)

This Triangular Cooperation Initiative strengthened the capacities of the Partnership member entities to develop and apply sustainable agriculture models adapted to the indigenous population, thus guaranteeing an active role for the small-scale producer organisation as key actors in economic development and sustainability.

Continuity of the Partnership

STARTING POINT: Existing North-South relationship that extended its scope to more Beneficiaries in Latin America and the Caribbean.

The Partnership, as such, has been strengthened and maintained over time.

The dynamic of collaboration and joint work between all the Partnership member entities in the core areas of the Initiative has been maintained.

In addition, new entities have been incorporated.

Incorporation of the University of Bologna and the State Secretariat of International Relations of Tucumán.

Application of the knowledge generated

The knowledge generated has been applied by all Partnership member entities.

During its implementation, the Initiative involved final beneficiaries (organisations and groups of small-scale indigenous producers).

The Beneficiary entity has also continued to work closely with these groups, even extending the scope, who have benefited and have applied the knowledge generated during the Initiative, as well as from complementary initiatives (new projects that build on the content of the Initiative, focusing on capacity-building).

Impact

Applying this knowledge has enabled the Beneficiary entity to successfully tackle the development challenge that gave rise to the Initiative with the necessary quality and guarantees. At the same time, the other Partnership member entities have increased the impact of their interventions.

Future prospects

Continue the Partnership's work dynamics and openness towards new entities.

Continue to make progress in applying knowledge by all Partnership member entities and openness to new areas of work that are closely aligned with the Initiative.

Continue to make progress in the transfer of knowledge to the beneficiary groups, extending the scope, and monitoring and evaluating the impact in their respective areas of intervention.

FACTORS THAT HAVE ENABLED IMPACT
The methodology used during implementation of the Initiative, which enabled a high level of ownership of the knowledge generated by the Beneficiary entity.
FACTORS THAT HAVE HINDERED IMPACT
–
NEW EX POST EXERCISE
Yes (2024)

Smart Cities

A TRIANGULAR COOPERATION INITIATIVE ARGENTINA • AUSTRIA • COLOMBIA • COSTA RICA • GUATEMALA • MEXICO

• URUGUAY • EUROPEAN UNION



[» More information](#)

BENEFICIARY	FIRST PROVIDER	SECOND PROVIDER	COLLABORATING ENTITIES
Fundación para la gestión y el desarrollo de Colombia	La firma en modelos de gestión	INSTITUTO FEDERAL DE PROMOCIÓN Y ASesorÍA MUNICIPAL	CONSEJO MUNICIPAL DE FORTALECIMIENTO
Mancomunidad Metrópoli de Los Altos	Municipio de Punta del Este	juntos avanzamos más	Ministerio de Ciencia y Tecnología
CBA	Cives Solutions	TRIANGULAR COOPERATION EU-LAC FACILITY CO-FINANCED BY THE EUROPEAN UNION	Fundepos University

Objective

(reached upon finalising the implementation period)

This Triangular Cooperation Initiative strengthened the capabilities of the Partnership member entities and provided the tools to design, apply and evaluate strategic municipal plans under the Smart Cities model, ensuring a comprehensive vision of planning, based on the motivation and commitment of the teams in the municipalities or local entities, and with the aim of engaging all stakeholders throughout the entire process.

Continuity of the Partnership

STARTING POINT: Existing North-South relationship that extended its scope to more Beneficiaries in Latin America and the Caribbean.

The Partnership, as such, has not been consolidated and has not been maintained over time.

However, some of the Partnership member entities continue to engage in bilateral collaboration in the core areas of the Initiative and have formalised their frameworks for collaboration.

In addition, thanks to the knowledge generated in the framework of the Initiative, some of these entities have initiated bilateral relationships as knowledge providers with other entities.

Agreement between MINCYT (Ministry of Science, Technology, and Innovation of Argentina) and the Government of Uruguay for cooperation in the field of cybersecurity.

Application of the knowledge generated

The knowledge generated has been applied by some of the Beneficiary entities.

They have also been applied by third entities with similar challenges, benefiting from the expertise offered by some of the Partnership member entities.

Creation of Smart Tourism Destinations in cities in Costa Rica and Uruguay.

In parallel, processes have been initiated for outreach beyond the scope of the Partnership and the third-party entities.

Agreement between the Catholic University of Córdoba and the Technological Institute of Costa Rica to develop an international course on Smart Tourism.

Impact

Applying the generated knowledge has enabled the Beneficiary entity to successfully tackle the development challenge that gave rise to the Initiative with the necessary quality and guarantees.

Future prospects

Maintain bilateral relations between the different Partnership member entities.

Keep up the momentum of applying the knowledge generated by some of the Beneficiary entities.

Maintain the communication and visibility dynamics associated with the ADELANTE Window as a guarantee of quality.

FACTORS THAT HAVE ENABLED IMPACT
The similarities in characteristics and level of development of the local entities of the Partnership.
The identification of specific 'sub-topics' of shared interest, such as tourism.
FACTORS THAT HAVE HINDERED IMPACT
The change in focal points in some of the Partnership member entities.
NEW EX POST EXERCISE
Yes (2024)

Telemedicine for social inclusion

A TRIANGULAR COOPERATION INITIATIVE **BRAZIL • ITALY • PANAMA • SPAIN • EUROPEAN UNION**



[» More information](#)

BENEFICIARY	FIRST PROVIDER	SECOND PROVIDER	COLLABORATING ENTITIES

Objective (reached upon finalising the implementation period)

This Triangular Cooperation Initiative strengthened the capabilities of the Beneficiary entity to establish a local telemedicine deployment model, based on a four-fold approach (regulatory, health, scientific-technological and budgetary), which effectively contributes to universal health coverage and access to quality essential health services, with a focus on social inclusion through solutions oriented towards the most vulnerable.

Continuity of the Partnership

STARTING POINT: Existing North-South relationship that was strengthened by the addition of partners from Latin America and the Caribbean as First providers.

The Partnership, as such, has not been consolidated and has not been maintained over time.

* Application of the knowledge generated

The knowledge generated has been applied by the First provider* in terms of actions and policy.

Improvement of teleconsultation services from telephone call to video call, and extension of these services to hard-to-reach areas of Panama.

* Impact

Applying this knowledge has enabled the First provider entity to increase the impact of its interventions.

It has also enabled the entity to become a knowledge provider in various regional processes.

Futur prospects

With regard to the First provider: continue to make progress in applying knowledge and gaining access to international funding in order to broaden its scope in the development of new public policies.

FACTORS THAT HAVE ENABLED IMPACT

In the country of the First provider: the policy priority given to the subject matter of the Initiative, the commitment of the First provider and the commitment of all the professionals involved.

FACTORS THAT HAVE HINDERED IMPACT

In the context of the Beneficiary entity: changes in political and institutional priorities.

NEW EX POST EXERCISE

Yes (2024)

(*) The particularity of this Initiative is that the knowledge generated has been applied especially by the First provider entity, to a greater extent than the Beneficiary entity.

Training in Restorative Justice and Therapeutic Jurisprudence

A TRIANGULAR COOPERATION INITIATIVE **COSTA RICA • MEXICO • PARAGUAY • SPAIN • EUROPEAN UNION**



[» More information](#)

BENEFICIARY	FIRST PROVIDER	SECOND PROVIDER	COLLABORATING ENTITY

Objective (reached upon finalising the implementation period))

This Triangular Cooperation Initiative strengthened the capacities of the Partnership member entities to design, implement, develop and consolidate restorative processes, harnessing the potential that technology offers to guarantee access to such processes for vulnerable groups.

Continuity of the Partnership

STARTING POINT: Existing South-South relationship that was strengthened with the incorporation of EU partners as Second providers.

The Partnership, as such, has been strengthened and maintained over time.

The dynamic of collaboration and joint work between all the Partnership member entities in the core areas of the Initiative has been maintained.

In addition, new entities have been incorporated.

Incorporation of the Judicial Power of the Dominican Republic.

+ Application of the knowledge generated

The knowledge generated has been applied by all Partnership member entities.

In addition, it has been widely disseminated at the international level, which has allowed it to be shared and applied beyond the scope of the Partnership member entities.

Participation in the VII Ibero-American Congress on Therapeutic Justice.

During its implementation, the Initiative involved final beneficiary groups (civil society organisations and users of Restorative Justice). The Partnership member entities have continued to work closely with these groups, even extending the scope, who have benefited and have applied the knowledge generated during the Initiative and afterwards.

+ Impact

Applying this knowledge has enabled the Beneficiary entities to successfully tackle the development challenge that gave rise to the Initiative with the necessary quality and guarantees. At the same time, the other Partnership member entities have increased the impact of their interventions.

Future prospects

Continue the Partnership's work dynamics and openness towards new entities.

Continue to make progress in applying knowledge by all Partnership member entities.

Continue to make progress in the transfer of knowledge to the beneficiary groups, monitoring and evaluating the impact in their respective areas of intervention.

FACTORS THAT HAVE ENABLED IMPACT

The relevant partnership framework designed during the implementation of the Initiative.

The appropriate framework of collaboration designed during implementation of the Initiative, which has allowed for policy and institutional support at the highest level and has been widely acknowledged by civil society.

The establishment of lines of action with a time-frame beyond the implementation period.

FACTORS THAT HAVE HINDERED IMPACT

-

NEW EX POST EXERCISE

Yes (2024)

Workshop schools for employment and entrepreneurship

A TRIANGULAR COOPERATION INITIATIVE CHILE • PARAGUAY • URUGUAY • SPAIN • EUROPEAN UNION



» More information

BENEFICIARY



FIRST PROVIDER



SECOND PROVIDER



COLLABORATING ENTITIES

Uruguayan Agency for International Cooperation
Mirada Ciudadana

Objective

(reached upon finalising the implementation period)

This Triangular Cooperation Initiative strengthened the capacities of the member entities of the Partnership to generate and apply a new model of support for technical and vocational education and entrepreneurship, as part of the response to the socio-economic effects of the crisis caused by the COVID-19 pandemic. This allowed them to harness the knowledge and expertise of two successful and complementary models, with the aim of making them available to the international community.

Continuity of the Partnership

STARTING POINT: Existing South-South relationship that was strengthened with the incorporation of European Union partners as Second providers.

The Partnership, as such, has not been consolidated and has not been maintained over time.

However, some of the Partnership member entities have continued their bilateral collaboration in the core areas of the Initiative.

Application of the knowledge generated

The knowledge generated has been partially applied by all Beneficiary entities, more in terms of concrete actions than at the policy level.

The model developed during implementation of the Initiative has not been applied.

During its implementation, the Initiative involved final beneficiary groups (young entrepreneurs).

The Beneficiary entities have continued to work closely with these groups, even extending the scope, who have benefited and have applied the knowledge generated during the Initiative.

Large-scale training in several municipalities on entrepreneurship, with a special focus on vulnerable groups.

Impact

Applying this knowledge has enabled the Beneficiary entities to successfully tackle the development challenge that gave rise to the Initiative with the necessary quality and guarantees.

Future prospects

Maintain bilateral relations between the different Partnership member entities.

Continue to make progress in applying knowledge by the Beneficiary entities, at least in terms of the actions taken.

Continue to make progress in the transfer of knowledge to the Beneficiary groups, monitoring and evaluating the impact in their respective areas of intervention.

Continue to seek national public funding and international funding for the implementation of the model developed during the Initiative's implementation, which is still relevant, benefiting from the connection with the ADELANTE Window as a guarantee of quality.

FACTORS THAT HAVE ENABLED IMPACT

The relevance of the knowledge generated as a response to the challenges of the Beneficiary entities and the final beneficiary groups.

FACTORS THAT HAVE HINDERED IMPACT

The change in focal points in some of the Partnership member entities.
Not having foreseen the leverage of financial resources to implement the model.

NEW EX POST EXERCISE

Yes (2024)

ANNEX A

Effectiveness. Quality markers to assess the effectiveness of Triangular Cooperation Initiatives co-financed by the ADELANTE Window.

Cross-cutting elements

- The activities have been communicated and disseminated in accordance with the communication and visibility guidelines of the ADELANTE Window.
- The Human Rights-Based Approach has been effectively mainstreamed and concrete measures have been implemented in the activities of the Initiative.
- The Gender Equality Approach has been effectively mainstreamed and concrete measures have been implemented in the activities of the Initiative.
- The Environment and Climate Change Approach has been effectively mainstreamed and concrete measures have been implemented in the activities of the Initiative.

Relevance

- The work plan has been relevant to the development challenge identified by the Partnership.
- The work plan has been relevant to the capacities (both to offer and to benefit) of all Partnership member entities.
- The initial work plan has been suitable or has been adapted to ensure alignment with the evolving context or the Partnership.
- Synergies/coordination with other ADELANTE Window Initiative(s) or with any other programme, project or cooperation action have been identified.

Efficiency

- The Partnership member entities have participated in the activities implemented (technical/financial).
- The ADELANTE Window resources have had a positive cost-benefit ratio.
- Activities have been implemented as planned.

Effectiveness

- The working teams of the Partnership member entities have included technical professionals and decision-makers.
- Direct beneficiaries have used and benefited from the products of the Initiative.
- The products developed in the Initiative have contributed to the achievement of the objective.
- The objective has been achieved.
- The implementation mechanism (ADELANTE Window) has been successful in achieving the objective of the Initiative.

Prospects for impact

- The Partnership is expected to apply the knowledge generated to address the identified development challenge.

Prospects for sustainability

- The model developed through the Initiative can potentially be replicated in other contexts.
- The Partnership has been strengthened throughout the Initiative, the Partnership entities are expected to continue to work together, and other entities may join.

Impact. Form for the joint ex post analysis exercise

At the end of the Initiative’s implementation period, what were the Partnership’s expectations for the following year?

- Expectations with regard to the continuity of the objectives over time (development impact)
- Expectations in relation to a greater scope of application or implementation of the knowledge generated (beyond the scope of the Initiative)
- Expectations regarding the continuity of the joint work or even an increase in the number of Partnership member entities

At this stage, does the Partnership feel that these expectations have been met?

- Continuity of objectives over time (development impact)
- Broader scope or wider application of the knowledge generated (beyond the scope of the Initiative)
- Continuity of joint work or even an increase in the number of Partnership member entities

Where expectations have been met:
What factors have been essential? What insights have been gained?

Where expectations have not been met:

What factors have made this difficult or impossible? Is there an incentive and possibility to correct them? What insights have been gained?

In cases where there have been direct beneficiaries who are not directly affiliated with the Partnership member entities, has the relationship with these individuals been maintained in any way?

Are there any additional products you would like to share with the ADELANTE Window or with third parties (e.g., new studies, new reports)?

At this point in time and in light of the above, how could the ADELANTE Window contribute?

Has the journey of the Initiative and the Partnership been shared and given visibility? Can the ADELANTE Window contribute to better communication and visibility?

Do you have any comments or recommendations for future editions of the ADELANTE Window or for new EU Triangular Cooperation projects and programmes?

Additional comments

In the case of a second or subsequent joint ex post analysis exercise, have the assessments (comments and recommendations) of DG INTPA in previous exercises been taken into account and have they been useful?



www.adelante2.eu



This report has been produced with financial support from the European Union.
The contents of this report are the sole responsibility of ADELANTE 2 and do not in any way reflect the views of the European Union.